



ERMi Automatic, ohne Armband

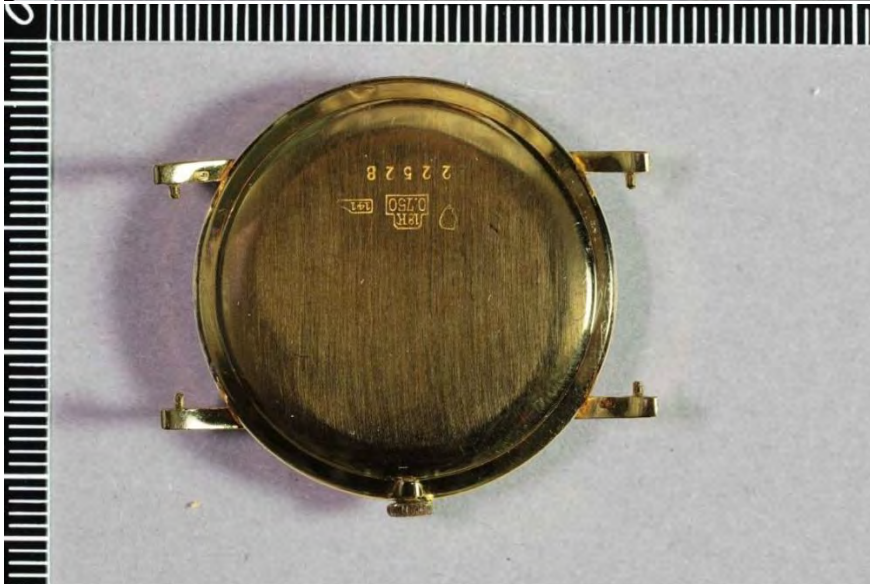
08.05



JUNGHANS Chronometer, ohne Armband

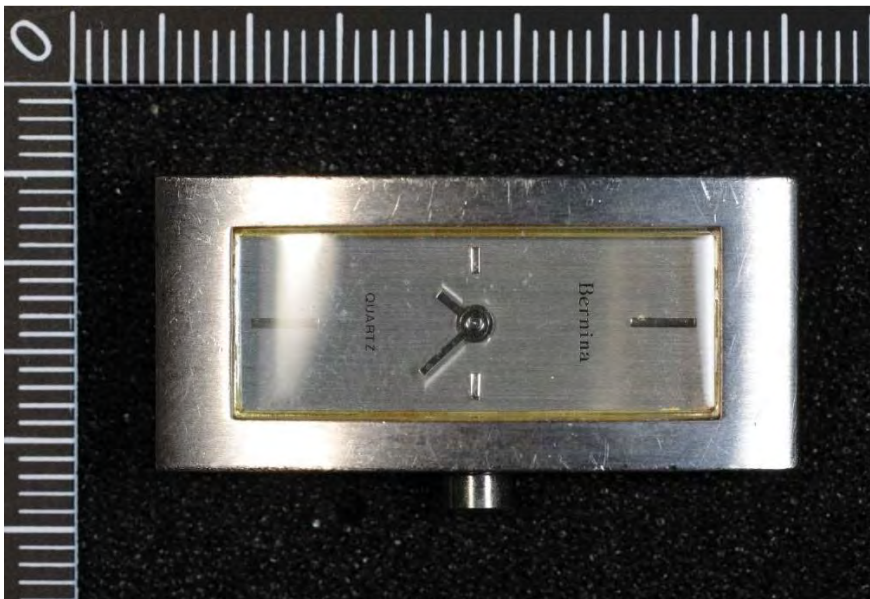
08.06





STOWA, ohne Armband, messingfarben

08.07



Bernina Damenarmbanduhr, ohne Armband

09.04



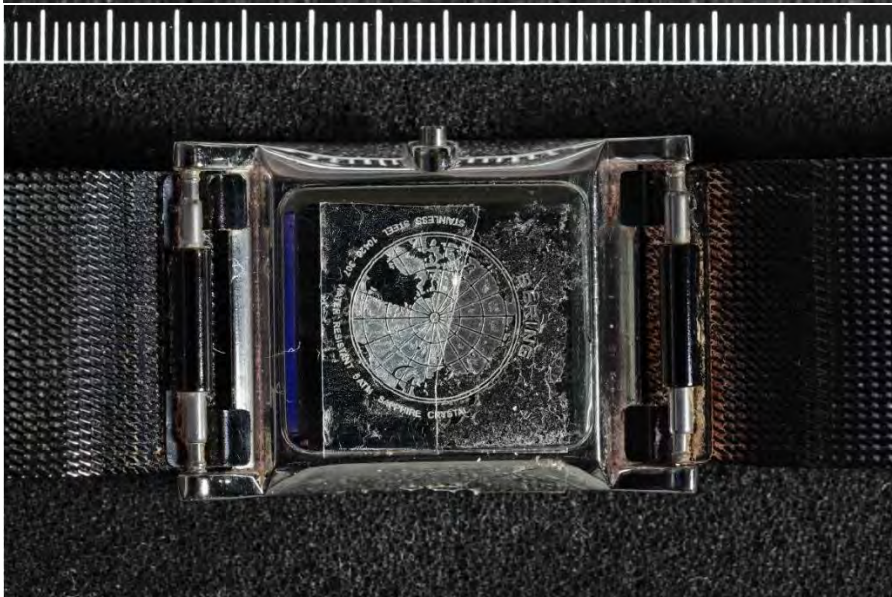
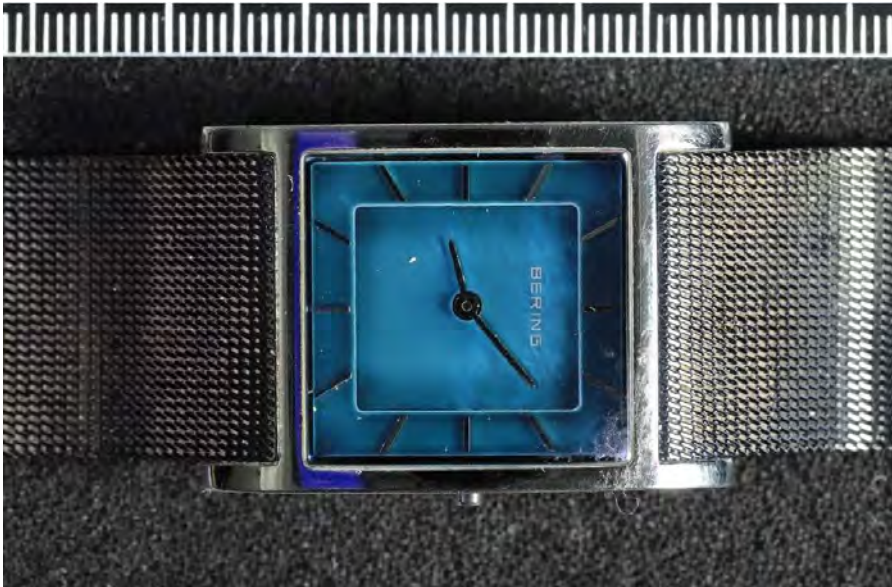
RADO, ohne Armband

08.09



Laco, ohne Armband

09.06



BERING, schwarzes Metallarmband

06.80



Philip Watch, ohne Armband, schwarzes Zifferblatt

06.79



Bijou, goldfarben



Kronseglar, blaues Zifferblatt, blaues Armband

11.01



Longines Automatic, schwarzes Lederarmband

11.02



EBEL, schwarzes Armband

11.03



Longines Armband, braun

11.04

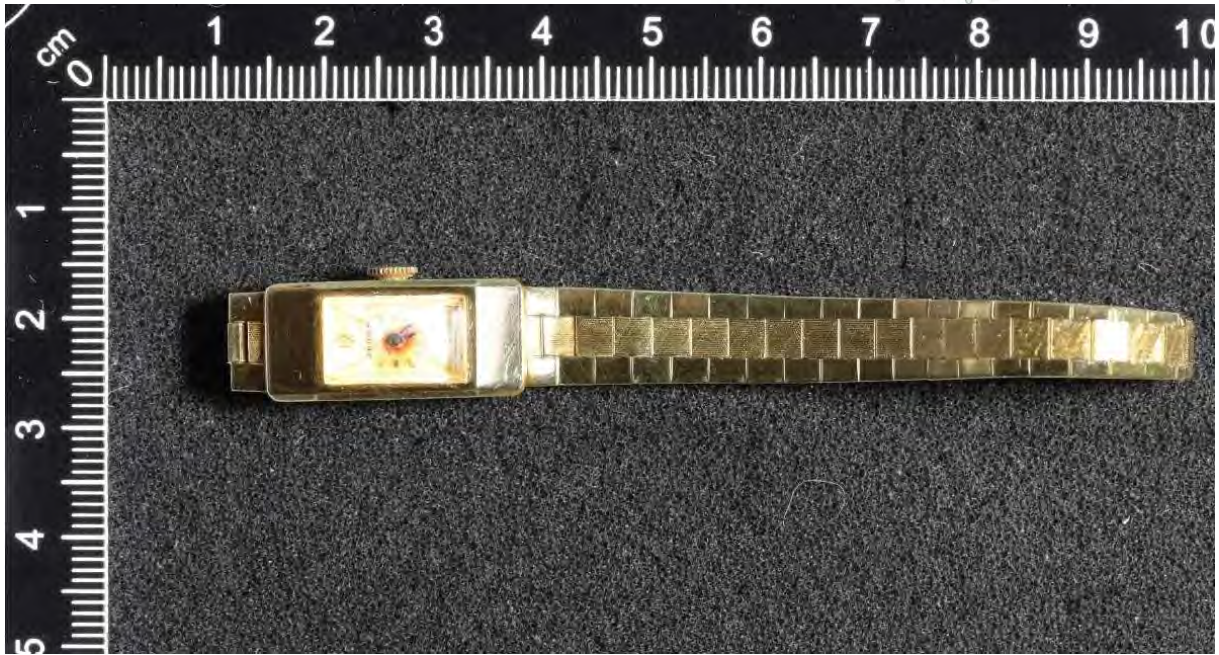


Longines Automatic, ohne Armband

11.08



BWC Swiss, braunes Armband, 11.05
Beschriftung Rückseite: „Für 25-jährige Mitarbeit Binding Brauerei AG“



PRIOSA, goldfarben

13.12.01